

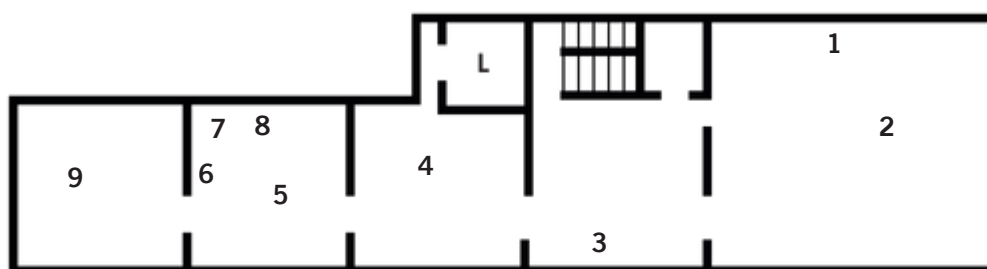
BAUEN UND TÖTEN

GREGOR SCHNEIDER

Mappa della mostra | Map of the exhibition

Per rispettare il percorso di visita, è necessario utilizzare le scale.
In caso di particolari esigenze è possibile prendere l'ascensore.

To respect the visit itinerary it is necessary to use the stairs.
In case of special needs, it is possible to take the lift.



Level 1
Primo piano | First Floor
L Ascensore | Lift

1 SONNIGER UNTERGANG

Gregor Schneider, Hambach coal mine 2022
video amatoriale | amateur video 6'19"

1 KUNSTLANDSCHAFT

Gregor Schneider, Garzweiler coal mine 2022
video amatoriale | amateur video 4'41"

2 RS 1 (Recycled Sculpture)

Gregor Schneider, Rheydt 1996-2023
sculture e materiali di costruzione da *Haus u r* (mattoni, legno, plastica, pittura) | sculptures and building material from *Haus u r* (stones, wood, plastic, paint)
94 x 125 x 80, ca. 100 kg

3 WEISSE FOLTER

Gregor Schneider, Düsseldorf 2007
video amatoriale | amateur video 19'49"

4 HIGH SECURITY AND ISOLATION CELL No.4

Gregor Schneider, Rheydt 2005
stanza | room - mixed media
230 x 353 x 230 cm

5 3D SCAN GEBURTSHAUS

Gregor Schneider, Rheydt 2014
scultura - penna USB (registrata) | sculpture - USB-Stick (recorded)
1 x 5,2 x 2 cm, ca. 0,5 kg

6 SCHLAFEN

Gregor Schneider, Rheydt 2014
still life video
video amatoriale | amateur video 10'0"

6 ESSEN

Gregor Schneider, Rheydt 2014
still life video
video amatoriale | amateur video 7'35"

7 STUHL

Gregor Schneider, Rheydt 2014
scultura - plastica, pittura | sculpture - plastic, paint
82 x 55 x 54 cm, ca. 5 kg

8 GEBURTSHAUS GOEBBELS

Odenkirchener Str. 202
Gregor Schneider, Rheydt 2014
still life video
video amatoriale | amateur video 8'8"

8 ENTKERNUNG GEBURTSHAUS GOEBBELS

Odenkirchener Str. 202
Gregor Schneider, Rheydt 2014
still life video
video amatoriale | amateur video 13'13"

9 GOLDEN LION (9x)

Gregor Schneider, 2001-2013
sculture - stagno, granito, pittura | sculptures - tin, granite, paint
16 x 26 x 9 cm, 5 kg

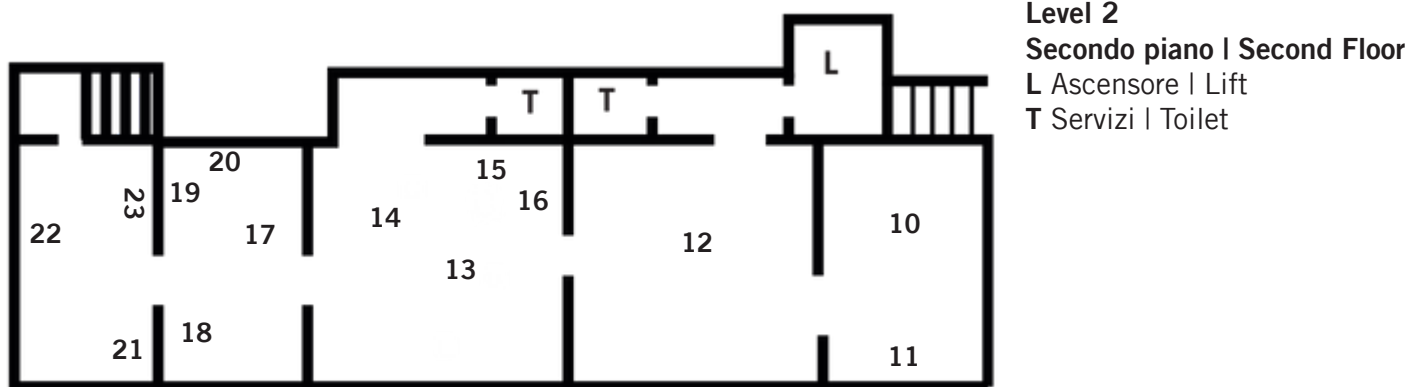
BAUEN UND TÖTEN

GREGOR SCHNEIDER

Mapa della mostra | Map of the exhibition

Per rispettare il percorso di visita, è necessario utilizzare le scale.
In caso di particolari esigenze è possibile prendere l'ascensore.

To respect the visit itinerary it is necessary to use the stairs.
In case of special needs, it is possible to take the lift.



Level 2

Secondo piano | Second Floor

L Ascensore | Lift

T Servizi | Toilet

10 KOLKATA GODDESS VIII

Gregor Schneider, Kolkata 2011
scultura - bamboo, paglia, fango di Hooghly River, scarti di fabbrica e pittura | sculpture - bamboo, straw, Hooghly River sludge, leftovers of fabric and paint
ca. 163 x 83 x 65, ca. 10 kg

10 KOLKATA GODDESS VII

Gregor Schneider, Kolkata 2011
scultura - bamboo, paglia, fango di Hooghly River, scarti di fabbrica e pittura | sculpture - bamboo, straw, Hooghly River sludge, leftovers of fabric and paint
ca. 163 x 83 x 65, ca. 10 kg

10 KOLKATA GODDESS II

Gregor Schneider, Kolkata 2011
scultura - bamboo, paglia, fango di Hooghly River, scarti di fabbrica e pittura | sculpture - bamboo, straw, Hooghly River sludge, leftovers of fabric and paint
ca. 163 x 83 x 65, ca. 10 kg

10 KOLKATA GODDESS IV

Gregor Schneider, Kolkata 2011
scultura - bamboo, paglia, fango di Hooghly River, scarti di fabbrica e pittura | sculpture - bamboo, straw, Hooghly River sludge, leftovers of fabric and paint
ca. 163 x 83 x 65 cm, ca. 10 kg

11 KOLKATA (construction)

Gregor Schneider, Kolkata 2011
video, 14'14"

11 KOLKATA (religious festival)

Gregor Schneider, Kolkata 2011
video 6'09"

11 KOLKATA (farewell)

Gregor Schneider, Kolkata 2011
video 10'20"

12 KINDERZIMMER

Gregor Schneider, Rheydt 2008
stanza | room, mixed media
218 x 362 x 332 cm

13 SCHWANZ IM EIMER

Gregor Schneider, Rheydt 1999-2000
scultura - stucco, capelli finti, vaselina, plastica | sculpture - stucco, false hair, vaseline, plastic
40 x 30 x 30 cm

14 MATRATZE

Gregor Schneider, Rheydt 2008
scultura - materasso, legno, silicone, sapone, colore | sculpture - mattress, wood, silicone, soap, color
98 x 206 x 93 cm

15 HAUS u r

Gregor Schneider, Rheydt 1996
video amatoriale | amateur video 31'45"

16 TOTES HAUS u r

Gregor Schneider, Venezia 2001
video amatoriale | amateur video 31'45"

17 KIND (sitzend ohne Kopf) (No. 2)

Gregor Schneider, Rheydt 2004
scultura - silicone, abiti, busta di plastica | sculpture -
silicone, clothes, plastic bag
45 x 130 x 40 kg

18 KIND (sitzend ohne Kopf) (No. 3)

Gregor Schneider, Rheydt 2004
scultura - silicone, abiti, busta di plastica | sculpture -
silicone, clothes, plastic bag
45 x 130 x 40 kg

19 DIE FAMILIE SCHNEIDER

Waldenstreet 16
Gregor Schneider, London 2004
video 12'34"

20 DIE FAMILIE SCHNEIDER

Waldenstreet 14
Gregor Schneider, London 2004
video 12'34"

21 400 METER BLACK DEAD END

Gregor Schneider, Napoli 2006
foto | photo 42 x 52 cm (framed)

22 BAUCH

Gregor Schneider, Rheydt 1992
scultura - gesso | sculpture - gypsum
ca. 15 x 33 x 33 cm

23 BEGRABEN

Gregor Schneider, Liedberg 1984
foto | photo 42 x 52 cm (framed)

23 BEGRABEN

Gregor Schneider, Liedberg 1984
foto | photo 42 x 52 cm (framed)

23 BEGRABEN

Gregor Schneider, Liedberg 1984
foto | photo 42 x 52 cm (framed)

23 BEGRABEN

Gregor Schneider, Liedberg 1984
foto | photo 42 x 52 cm (framed)

23 BEGRABEN

Gregor Schneider, Liedberg 1984
foto | photo 42 x 52 cm (framed)

23 BEGRABEN

Gregor Schneider, Liedberg 1984
foto | photo 42 x 52 cm (framed)

23 BEGRABEN

Gregor Schneider, Liedberg 1984
foto | photo 42 x 52 cm (framed)

23 BEGRABEN

Gregor Schneider, Liedberg 1984
foto | photo 42 x 52 cm (framed)

23 BEGRABEN

Gregor Schneider, Liedberg 1984
foto | photo 42 x 52 cm (framed)

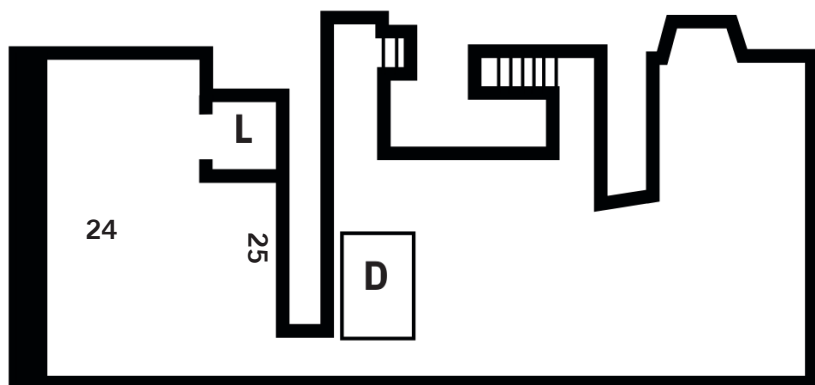
BAUEN UND TÖTEN

GREGOR SCHNEIDER

Mapa della mostra | Map of the exhibition

Per rispettare il percorso di visita, è necessario utilizzare le scale.
In caso di particolari esigenze è possibile prendere l'ascensore.

To respect the visit itinerary it is necessary to use the stairs.
In case of special needs, it is possible to take the lift.



Level 0
Piano Terra | Ground Floor
E Ingresso | Entrance
L Ascensore | Lift
D Front desk

24 ISOLIERTE WAND

Gregor Schneider, Rheydt 2000

scultura - cemento armato, piombo, lana di vetro, materia-
le fonoassorbente | sculpture - concrete, lead, glass wool,
sound absorbing material

205 x 80 x 70 cm

25 400 METER BLACK DEAD END

Gregor Schneider, Napoli 2006

foto | photo 42 x 52 cm (framed)

25 400 METER BLACK DEAD END

Gregor Schneider, Napoli 2006

foto | photo 42 x 52 cm (framed)

25 400 METER BLACK DEAD END

Gregor Schneider, Napoli 2006

foto | photo 42 x 52 cm (framed)

25 400 METER BLACK DEAD END

Gregor Schneider, Napoli 2006

foto | photo 42 x 52 cm (framed)

Scopri di più sulla mostra
Discover more on the exhibition

