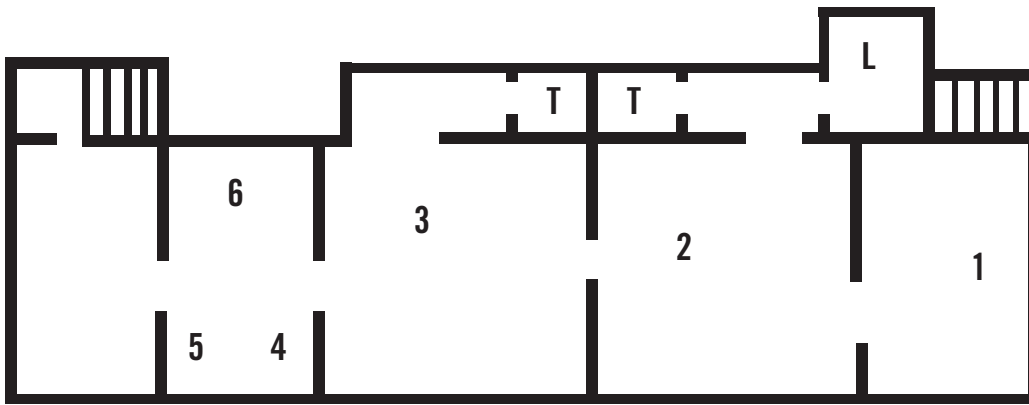


emoZone

MANFRED PERNICE

SECONDO PIANO / SECOND FLOOR



L Ascensore \ Lift

T Servizi \ Toilet

1 Manfred Pernice, *Restepfanne*, 2002,
tecnica mista, dimensioni variabili

Manfred Pernice, *Restepfanne*, 2002,
mixed media, variable dimensions

2 Manfred Pernice, *Untitled (bugnato)*,
2004, legno, ferro, cemento, fotografie e
video, dimensioni variabili (scultura
bugnato: 90 x 90 x 60 cm; scultura legno:
110 x 220 cm)

Manfred Pernice, *Untitled (bugnato)*, 2004,
wood, iron, cement, photographs and video,
dimensions variable (ashlar sculpture: 90 x
90 x 60 cm; wood sculpture: 110 x 220
cm)

3 Manfred Pernice, *Dresdner Stollen*, 1997, tecnica mista, 115 x 130 x 115 cm

Manfred Pernice, *Dresdner Stollen*, 1997, mixed media, 115 x 130 x 115 cm

4 Manfred Pernice, *Bianca*, 2010, cassa di legno, tappeto, carta da parati, lampada, cavo elettrico, materiali vari rinvenuti, 234 x 105,5 x 85 cm

Manfred Pernice, *Bianca*, 2010, wooden crate, carpet, wall paper, lamp, electric chord, various found materials, 234 x 105.5 x 85 cm

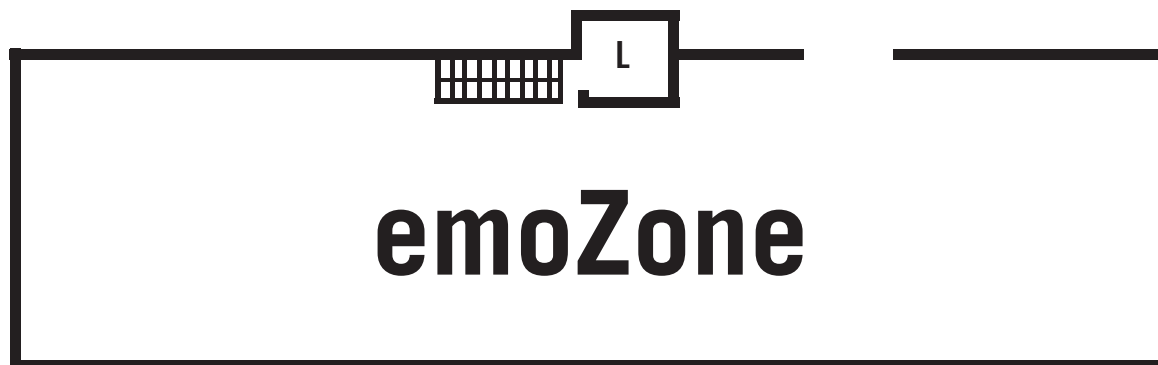
5 Manfred Pernice, *Antonia*, 2004, lampada, plastica, calce, 43 x 17 cm

Manfred Pernice, *Antonia*, 2004, lamp, plastic, concrete, 43 x 17 x 17 cm

6 Manfred Pernice, *Exscape 8*, 2006, legno, vernice, ceramica, plastica, 130 x 80 x 106 cm

Manfred Pernice, *Exscape 8*, 2006, wood, paint, ceramic, plastic, 130 x 80 x 106 cm

TERZO PIANO / THIRD FLOOR



L Ascensore \ Lift